



ANNUAL REPORT 2014
Habitat for Humanity Japan



IMPACT AS IA

Today, **1.6 billion people** are living without adequate shelter.
Half of them are in the Asia-Pacific region.



Contents

- 02 Introduction
- 04 Habitat in the Asia-Pacific Region
- 06 Build Community Impact
- 08 Build Sector Impact
- 09 Build Societal Impact
- 10 Financial Statements
- 11 Recognition

Almost **one fifth of the 4.3 billion people** in the Asia-Pacific region are living below the poverty line, earning less than \$1.25 a day. Population influx from rural areas to cities results in an increasing demand for housing. It is estimated **20,000 new dwellings are required every day** in this region.

The need for decent housing in the region continues to grow and is more pressing than ever before. To address the need with greater scale and impact, Habitat for Humanity embarks on a global and regional initiatives in the coming five years.

1 Build Community Impact

Improve Housing Conditions

- Serve families through sustainable construction and housing support services.
- Leverage shelter as a catalyst for community transformation.
- Grow capacity to serve the most vulnerable, the disaster-affected and the urbanizing world.

2 Build Sector Impact

Partner to Increase Shelter Access

- Support market approaches that increase products, services and financing for affordable housing.
- Promote policies and systems that advance access to adequate, affordable housing.

3 Build Societal Impact

Inspire Action to End Poverty Housing

- Serve as a leading voice in growing awareness of housing as a critical foundation for breaking the cycle of poverty.
- Mobilize volunteers as hearts, hands, and voices for the cause of adequate, affordable housing.

Building Home is Building Life

Just over ten years ago, Habitat for Humanity Japan started its operation to play a part in realizing “a world where everyone has a decent place to live.” Many things have changed since 2003 but the generosity of our supporters. We are grateful to those with whom our paths have crossed for their tireless support and encouragement. Coincidentally, 2014 was a monumental year for Habitat for Humanity International; since 1976 we have now assisted 800,000 families globally with building, rehabilitating or repairing of their homes.

As we acknowledge such achievements, we must also look towards the future. With unprecedented needs for housing in the Asia-Pacific region, Habitat for Humanity Japan is needed more than ever.

“Why house?” is a question we often receive. Our answer is simple, yet full of conviction; because houses can protect lives. Housing issue in Asia seems to only grow in complexity day by day, yet the power of housing remains simple and true. In 2015, Habitat for Humanity Japan will continue to strive towards improved housing situation around the world, and we hope you will take on the challenge with us.



Mitsuya Goto
Chair of the Board
Habitat for Humanity Japan

後藤 光彌



“It all started with a home.”

Every family deserves a chance for a new beginning. Habitat works in 18 countries in the Asia-Pacific region to make their dreams come true.

The Philippines

Typhoon Haiyan that struck the Visayas area of the Philippines on 8 November 2013 killed 6,300 people and damaged or destroyed more than 1.1 million homes. Habitat started distributing emergency shelter kits just days after the disaster, shifting to shelter repair kits as needs changed. To date, Habitat has helped more than 12,000 families with emergency shelter and shelter repair kits and is aiming to distribute more than 30,000 shelter repair kits and build 30,000 core houses.

Nepal

Habitat for Humanity houses are built using local construction technologies. For this reason, Habitat for Humanity Nepal's houses predominantly use bamboos. Habitat has trained many locals to build cost-effective, environmentally friendly bamboo houses. In November 2015, 2,000 volunteers from around the world will travel to Nepal for Habitat's 32nd annual Carter Work Project. Former President Jimmy Carter and First Lady Rosalynn will lead volunteers to build 100,000 homes.

Indonesia

Instead of flowers and cake, some mothers at a Habitat build-site in Indonesia received a fitting tribute. Women Build – A Tribute to Moms – saw mothers and daughters working alongside to build homes for 20 low-income families. The campaign's aim was to build 300 decent houses in 2014 for low-income families whose breadwinners are women. The project was part of Indonesia's Five-Year Campaign "I Build My Indonesia" which aims to help total of 60,000 low-income families by 2018.

Asia Pacific

Habitat Youth BUILD is a youth-led campaign in Asia, in which young people take action, raise money and increase awareness of the poverty housing situation in the region. In 2014, more than 800,000 people across 11 countries took part. In Japan, more than 200 student volunteers secured donations from over 1,000 people on the streets of Tokyo, Kyoto, Hiroshima and Oita. A workshop was also held in Tohoku to discuss continued support for families affected by the 2011 earthquake and tsunami.



Global Village Program

Active in 12 countries	Built 144 homes	Sent 968 Volunteers
----------------------------------	---------------------------	-------------------------------

Habitat for Humanity Japan invites thousands of volunteers from around the world to help families build a home, strengthen their community and enrich their lives. In 2014 Habitat for Humanity Japan mobilized the largest number of volunteers in the Asia-Pacific Region, and the number is increasing each year.

Houses Habitat for Humanity Japan builds with home partners and volunteers are called core houses. Those houses, in compliance with the globally-accepted Sphere standards, meet the minimum standards of shelter and settlement to secure subsistence and adequate sanitation.

Home Partner Story

Boonjua Bootmal's family lived in an inadequate home in Chachoengsao, Thailand. The makeshift hut pieced together with random materials on the streets was full of holes and without windows or doors. "When the cyclone hit, my husband and I held the roof from blowing away all night. I felt bad my children were not able to live in an adequate house and I could not protect their safety or health," said Boonjua. The family has started their new life in a brand new decent house they built with a volunteer team from Japan.

Community Building

Habitat for Humanity Japan looks beyond shelter to pave the way for the development of a community and the quality of life. Habitat for Humanity Japan helped renovate a deteriorated facility at 'The Ocean View Forest', a collection of remodeled traditional Japanese-style houses that now serve as a respite care facility to support children with serious illnesses or disabilities and their families.



Tohoku

Built or Repaired 57 homes 5 community facilities	Provided Housing Consultation to 102 families	Sent 744 Volunteers
--	---	-------------------------------

Self-Build project in Iwate Prefecture aimed at introducing a new solution for people who cannot own a home simply because they cannot afford it. Many volunteers came together to build a home, proving that anyone can have a decent home if people worked together. In Miyagi Prefecture Habitat for Humanity Japan implemented **Home Repair project** and advocated also for the support of earthquake-affected people in inland areas who have not received much assistance and are still facing difficulties.

Home Partner Story

Sato*, 58, and his 90-year-old mother lost their home in Ofunato, Iwate Prefecture, when it was swept away by the tsunami. Since then they have lived in a temporary housing provided by the government. As Sato and his mother want to stay in their own community in Okirai district of Ofunato city, they were not eligible for schemes supporting families to relocate. Habitat for Humanity Japan assisted Sato and his mother through its Self-Build project, which aimed at providing housing support services to those committed to rebuilding their own homes.

*Name changed at the request of home partner.



Sato building his own house

Public Sector Involvement

Responding to various housing needs requires multi-sectoral approaches. Habitat must work with the governments to identify the shared priorities of partners across the societal and political spheres, and develop platforms to better align. Habitat for Humanity Japan advocated for policymakers and community leaders to go further and examine whether or not the

conditions are conducive to better housing supports for the families who were not affected by tsunami but the great earthquake in Miyagi Prefecture as a component of the Home Repair project. The project involved Habitat for Humanity Japan staff providing housing consultations and financial support to families wanting to undertake home repair work.



Private Sector Engagement

Habitat helps to make housing markets work more effectively and sustainably for those in need. The market development approach improves the shelter of low-income families and disaster affected people by expanding market options that are more affordable to access. Corporates engaged in the housing

sector can also leverage their experience and reputation to advocate for pro-poor housing policies. Several corporates from housing sector joined the Self-Build project in Ofunato, Iwate Prefecture. Insulations, paint and power tools were offered, and some corporations sent

in volunteer teams made up of their employees. The project introduced a new solution for people who cannot build a home simply because they cannot afford it. Habitat continues to engage more partners to influence the markets to meet increasing shelter needs.



Volunteers Supporters

In the past year, as many as 1,700 volunteers and supporters lent a hand either physically or financially. The supporters not only raised walls, but also pushed for public policy and market changes. 'Volunteer Supporter' membership fees are utilized to support home partners. Individual philanthropy can enhance the social awareness about housing issues too. Donors such as 'House Supporters' (supporting members) have also played a part in making affordable housing a global priority through regular donations.

Campus Chapters

There are 27 Campus Chapters across Japan as of June 2014. Their members, totaling about 1,500, fundraise, raise awareness, and engage in international and local projects. Rapidly expanding their networks from two major cities - Tokyo and Osaka - to other local cities such as Sapporo, Hiroshima and Sendai, those young movers and shakers are making a major impact to realize "a world where everyone has a decent place to live."



Habitat for Humanity International practices good stewardship with all funds entrusted to its mission of eliminating substandard housing. Using funds wisely allows Habitat to serve more families and communities around the world.

Total global revenue in FY2014: \$277.2 million

Financial Statements

Specified Non-Profit Organization Habitat for Humanity Japan

(Unit : Japanese Yen)

Statement of Activity (For the year ended June 30, 2014)	
Ordinary Income	
Membership Fees	1,812,147
Donations	100,548,247
Grants	25,917,236
Project Revenue	789,104
Other Income	210,995
Total Ordinary Income	129,277,729
Ordinary Expenses	
Project Expenses	179,711,555
Administrative Expenses	18,011,317
Total Ordinary Expenses	197,722,872
Net Increase (Decrease) in Ordinary Income and Expenses	Δ68,445,143
Total Non Ordinary Expenses	20,856,089
Increase (Decrease) in Net Assets before taxes	Δ89,301,232

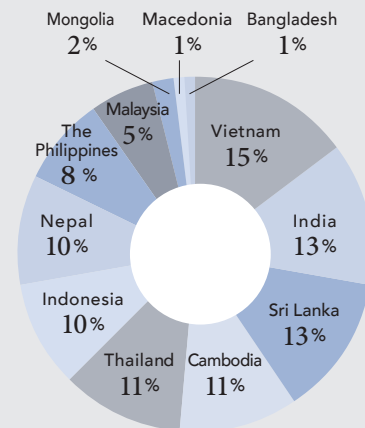
Balance Sheet (As of June 30, 2014)	
Assets	
Current Assets	24,070,667
Fixed Assets	4,760,943
Total Assets	28,831,610
Liabilities	
Current Liabilities	18,818,151
Fixed Liabilities	0
Total Liabilities	18,818,151
Net Assets	
Net Assets Brought forward from Prior Year	99,314,691
Decrease in Net Assets	89,301,232
Total Net Assets	10,013,459
Total Liabilities and Net Assets	28,831,610

Overseas Remittances

Total Contributions

(July 2013 to June 2014)

USD 310,000



Recognition



Marriot International

Nippon Paint

Kesen Arigato Project

Delta Air Lines

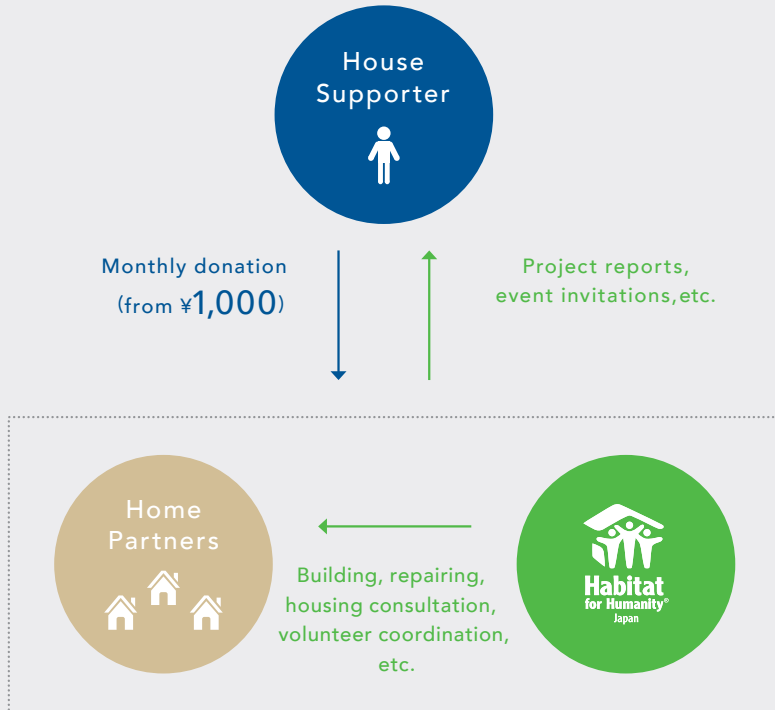
JANIC

The Society of Jesus - Japan Province

Springer Japan

Habitat for Humanity Japan is thankful for every donor who makes an invaluable contribution. This highlights just a few of the corporate partners and organizations whose support in fiscal year 2014 helped raise awareness of the global housing problem and build more homes with families in urgent need.

Let's make a difference. Be a House Supporter.



Who is a House Supporter?

Stacking bricks and mixing concrete is not the only way to build. When you become a House Supporter, you become part of the global organization and movement that builds future. Your monthly contribution is used where and when it's most needed - be it construction materials or community-building expenses. As a House Supporter, you will receive regular updates so you can stay connected to the future you help us build.

For more information: http://www.habitatjp.org/index_e.html



Habitat for Humanity Japan

Kindaikagakusha Bldg 3F, 2-7-15 Ichigayatamachi,
Shinjuku-ku, Tokyo 162-0843

Tel : +81-(3)-5579-2550 Fax : +81-(3)-5579-2551

E-mail : info@habitatjp.org Website: www.habitatjp.org